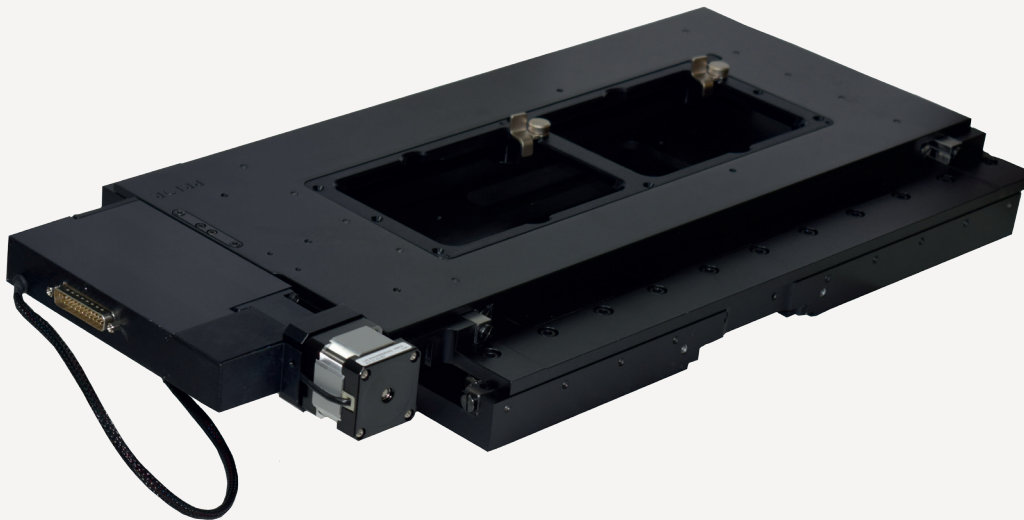


## H139

### 280 x 82 mm extended travel stage for inverted microscopes



The H139 stage with its extended travel range is capable of holding, 9 microscope slides, or two standard Prior stage inserts, such as two multiwell plates or a combination of multiwell plate and universal insert, making it ideal for high content scanning systems. Incorporating the Prior IST system, this stage is reliable, versatile and precise and is controlled via Prior's versatile ProScan® system.

- Accepts linear encoders
- Travel range of 280 mm x 82 mm
- Anti-backlash mechanism and adjustable limit switches
- Compatible with Nikon TE2000 and Nikon Ti, and the Olympus IX71, IX73, IX81 and 83.
- < 1µm resolution
- Interchangeable and low profile sample holders
- At least ± 0.7 µm repeatability
- RS232 and USB controlled, and compatible with most 3rd party software.

### Products Available

Product	Description
H139P1NN	H139 Stage with 1 mm ballscrew, 400 stepper motor, for Nikon Microscopes
H139E1N5	H139 Stage with 1 mm ballscrew, 400 stepper motor and 50 nm encoder, for Nikon microscopes
H139P1XD	H139 Stage with 1 mm ballscrew, 400 stepper motor, for Olympus Microscopes
H139E1XD	H139 Stage with 1 mm ballscrew, 400 stepper motor, for Olympus Microscopes
H171XR	9 slide holder for H139
H223XR2	2 micro titre plate holder for H139

## H139

280 x 82 mm extended travel stage for inverted microscopes

### Specifications

Performance	H139P1##	H139E1##
Uni-Directional Repeatability†	0.7 µm	0.7 µm
Minimum step size	0.01 µm	0.01 µm
Maximum speed‡	25 mm/s	25 mm/s
Average metric accuracy	0.059	0.046
Maximum Travel range	280 x 82 mm	280 x 82 mm
Maximum Load	10 kg	10 kg
Squareness	30 arc sec	30 arc sec
Ball Screw Pitch	1 mm	1 mm
Motor type (SPR) §	400	400
Encoders	No	Yes

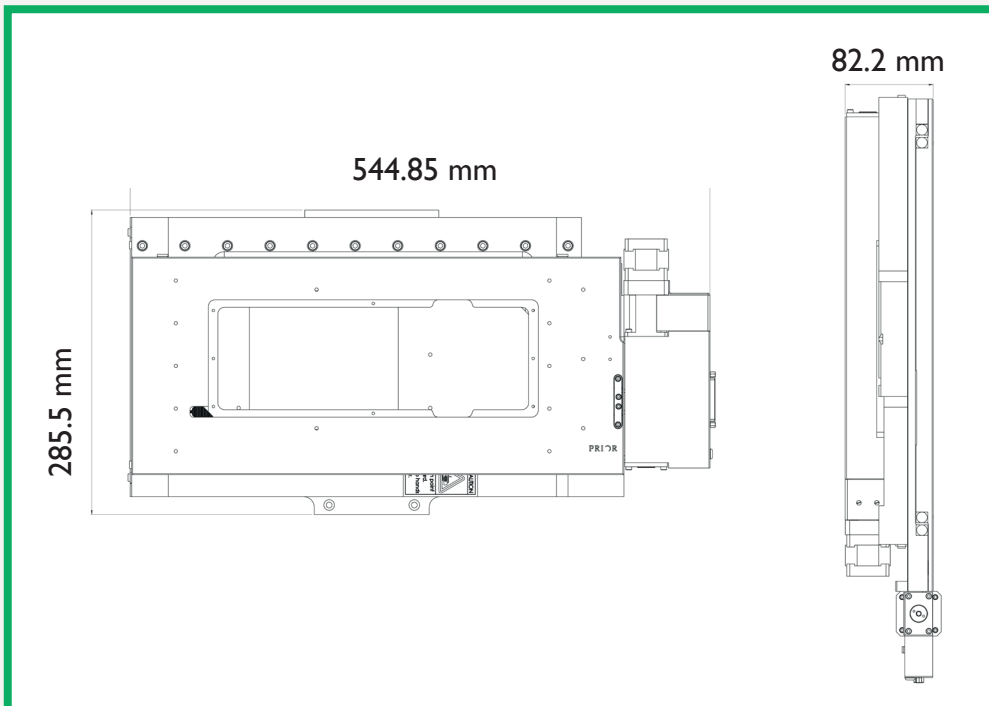
Note that the specifications above require the use of a ProScan II or above controller and were obtained via the Prior method of testing.

†Based on performance with the IST enabled measured over the full range of travel.

‡ Using a Prior ProScan controller with backlash correction enabled; all repeatability is uni directional.

§ Full Steps Per Revolution of motor

### Dimensions



### Worldwide distribution

**Prior Scientific Ltd**  
Cambridge, UK  
T. +44 (0) 1223 881 711  
E. [uksales@prior.com](mailto:uksales@prior.com)

**Prior Scientific Inc**  
Rockland, MA USA  
T. +1 781-878-8442  
E. [info@prior.com](mailto:info@prior.com)

**Prior Scientific GmbH**  
Jena, Germany  
T. +49 (0) 3641 675 650  
E. [jena@prior.com](mailto:jena@prior.com)

**Prior Scientific KK**  
Tokyo, Japan  
T. +81-3-5652-8831  
E. [info-japan@prior.com](mailto:info-japan@prior.com)